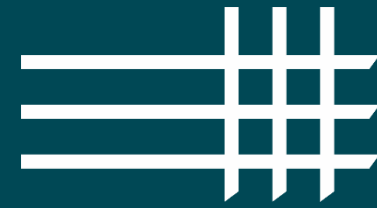


**Pernambuco  
Construtora**

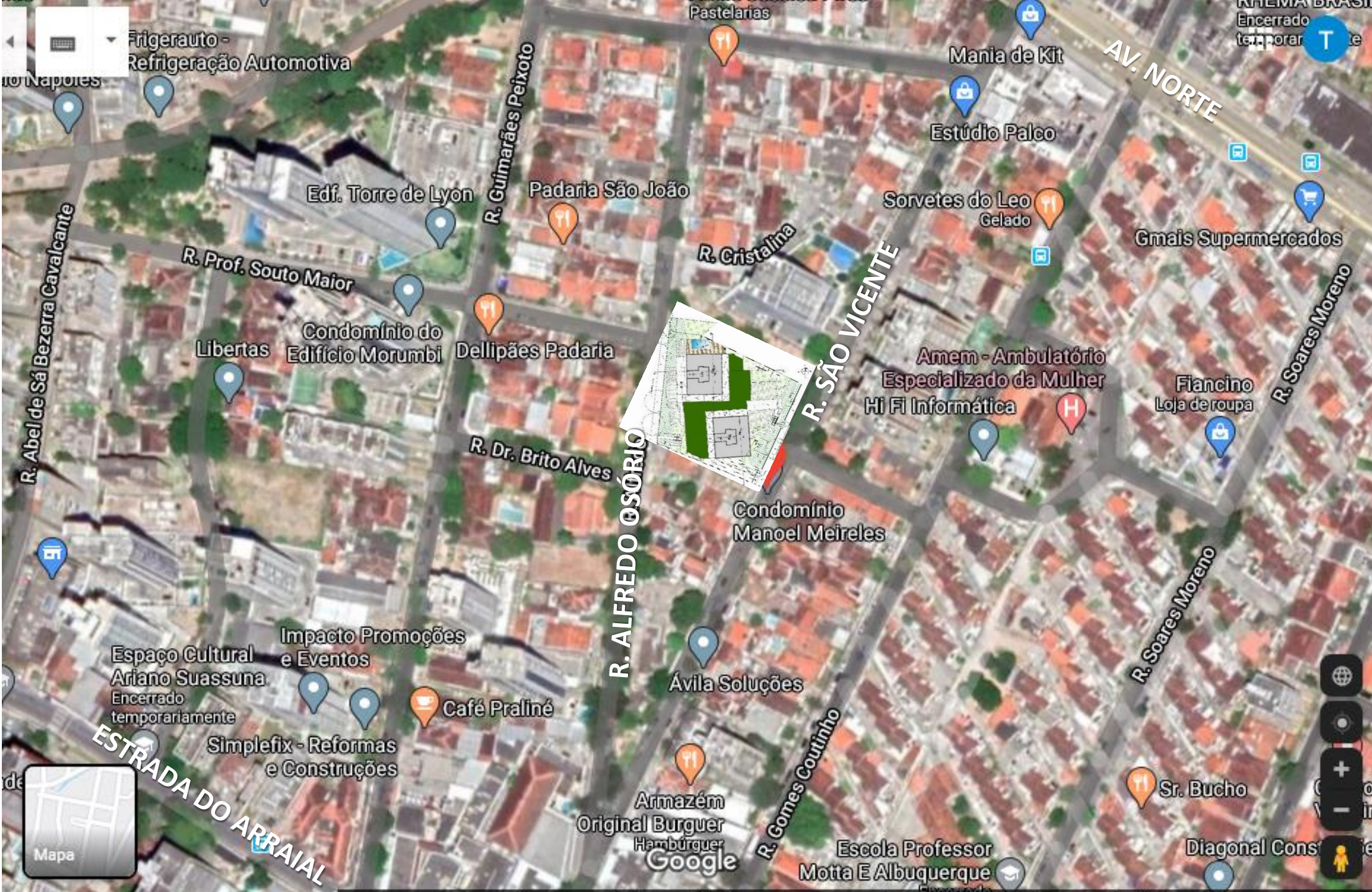


Pernambuco  
Construtora

ZONA NORTE,  
NÓS ESTÁVAMOS COM  
SAUDADE!








LOCALIZAÇÃO



- 
- An architectural rendering of two tall, modern apartment towers. The towers are white with green accents and large glass windows. They are set against a sunset sky with orange and blue tones. In the foreground, there are lush green trees and a paved road with a car driving. The scene is illuminated by the warm light of the setting sun.
- 14 PAV TIPO -TORRE A
  - 13 PAV TIPO TORRE B
  - 04 APTOS POR ANDAR
  - 56 APTOS TORRE A
  - 52 APTOS TORRE B



- Antecâmara com Locker Inteligente para Delivery
- Guarita c/ wc
- 01 hall por torre
- 02 elevadores por torre
- Lounge Gourmet
- Lounge de Convivência
- Lounge Relax
- Espaço Funcional
- Pet Place
- Piscina adulto e infantil
- Deck
- Horta e Pomar
- Minicampo
- Churrasqueira
- Gerador
- Bicicletário
- Playground com muro montessoriano



PAVIMENTO TÉRREO



- Brinquedoteca
- Fitness
- Coworking com multiuso
- Vestiário para funcionários



# PAVIMENTO VAZADO





## **GENTILEZA URBANA**

*Quando tratamos bem o mundo,  
ele nos trata bem de volta.*

*Para nós, o conceito de gentileza urbana é mais do que um projeto: é consciência ambiental e social que veio para ficar. A arquitetura do Tamarineira Prince Vanguard foi pensada para impactar positivamente a nossa cidade*



A modern urban courtyard featuring a paved walkway made of grey cobblestones. A large, dark tree trunk stands in a circular planter. In the background, there is a glass-enclosed area with a white umbrella and a wooden bench. The scene is set against a modern building with white walls and large windows.

**GENTILEZA URBANA**  
QUALIFICAÇÃO DO BAIRRO E CONFORTO  
PARA O PEDESTRE



An architectural rendering of a modern building with a glass-walled courtyard. The building has white tiled walls and large windows. The courtyard is enclosed by a glass wall and contains various plants, including a large tree with pink flowers and several palm trees. A person is riding a bicycle on a paved path in the foreground. The scene is set during sunset, with warm lighting and long shadows.

**GENTILEZA URBANA**  
MURO DE VIDRO PROMOVENDO A  
INTEGRAÇÃO DO VERDE COM ENTORNO



An aerial view of a modern, multi-story building with a white facade and large windows. The building features a prominent green roof with various plants and flowers. The surrounding area is landscaped with numerous palm trees, other green trees, and a paved walkway. A silver car is parked in a designated spot. The overall scene is bright and vibrant, showcasing a sustainable urban environment.

**GENTILEZA URBANA**  
TETO VERDE QUE PROPORCIONA RESPIRO,  
ACÚSTICA E SENSAÇÃO TÉRMICA



An aerial view of a modern building's courtyard. The courtyard is paved with grey bricks and features a central green lawn area. A silver car is parked on the right side of the courtyard. The lawn is surrounded by various trees, including large leafy trees and palm trees. There are also some lounge furniture pieces on the lawn. The building has a white facade with large windows. The overall scene is well-lit, suggesting a bright day.

**VAGAS AMPLAS**





# LOUNGE RELAX

PAISAGISMO PENSADO PARA UM REFÚGIO PARTICULAR





**HORTA E POMAR**



A modern outdoor garden featuring a raised vegetable bed with cabbages and purple flowers, a large tree with orange fruit, a pergola with a grapevine, and a built-in barbecue area with a grill and a counter. The garden is surrounded by a white wall and a wooden deck.

**HORTA, POMAR E CHURRASQUEIRA**  
ÁRVORES FRUTÍFERAS E MUITAS FLORES POR TODO  
O EMPREEDIMENTO



A modern outdoor swimming pool with a waterfall wall, wooden deck, and lounge furniture. The pool is surrounded by lush greenery and a wooden fence. The scene is set during sunset or sunrise, with warm lighting and a clear sky. The pool has a waterfall wall made of green tiles, and the deck is made of wood. There are lounge chairs and a table with chairs around the pool. The overall atmosphere is relaxing and luxurious.

# PISCINA

ESPAÇOS PENSADOS PARA A CONVIVÊNCIA  
CASCATA E DECK MOLHADO





**PLAYGROUND**

**MURO MONTESSORIANO**







**PLAYGROUND**  
**INTEGRAÇÃO COM O VERDE**





**MINICAMPO**  
DIVERSÃO PARA TODA A FAMÍLIA





**PAISAGISMO**  
**ÁRVORES FRUTÍFERAS E FLORES POR TODO**  
**O EMPREENDIMENTO**



A vibrant, pet-friendly garden scene. In the foreground, a small dog is standing on a grassy area. To its right, a wooden ramp with colorful bone-shaped rungs is visible. Further back, another dog is lying down. The garden is filled with lush greenery, including a large tree with blue berries on the left, a tree with yellow fruit in the center, and a tree with red fruit on the right. A wooden playhouse with a red roof and green railings is situated in the background. The scene is enclosed by a metal fence, and the overall atmosphere is bright and sunny.

**PET PLACE**

**SEU MELHOR AMIGO MAIS FELIZ**





**BRINQUEDOTECA**  
**MONTESORI COM ESPAÇO SENSORIAL**





**LOUNGE GOURMET**  
PARA OS MELHORES  
MOMENTOS COM OS AMIGOS



A modern coworking meeting room. In the center is a long, light-colored conference table surrounded by several black office chairs. On the table are some papers and a small stack of books. To the left, a large black TV is mounted on a wall with a textured, geometric pattern. A dark, speckled counter runs along the wall behind the table, with two large potted plants on it. To the right, there's a wooden cabinet with a coffee machine, cups, and a small plant on top. Large windows on the right wall offer a view of trees and a sunset. The room is lit with track lighting on the ceiling and natural light from the windows.

**COWORKING COM MULTIUSO**  
PARA REUNIÕES AGENDADAS, NO TAMANHO  
QUE VOCÊ PRECISAR





**COWORKING COM MULTIUSO**  
OU PARA CABELEIREIRO, MASSAGEM E O  
QUE VOCÊ DESEJAR





**FITNESS**

**MÁQUINAS PROFISSIONAIS PARA UM  
TREINO COMPLETO**





**ESPAÇO FUNCIONAL**  
TREINO AO AR LIVRE, INTEGRADO  
COM A NATUREZA



**PENSAMOS  
E PESQUISAMOS  
UM NOVO JEITO DE MORAR**

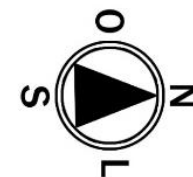






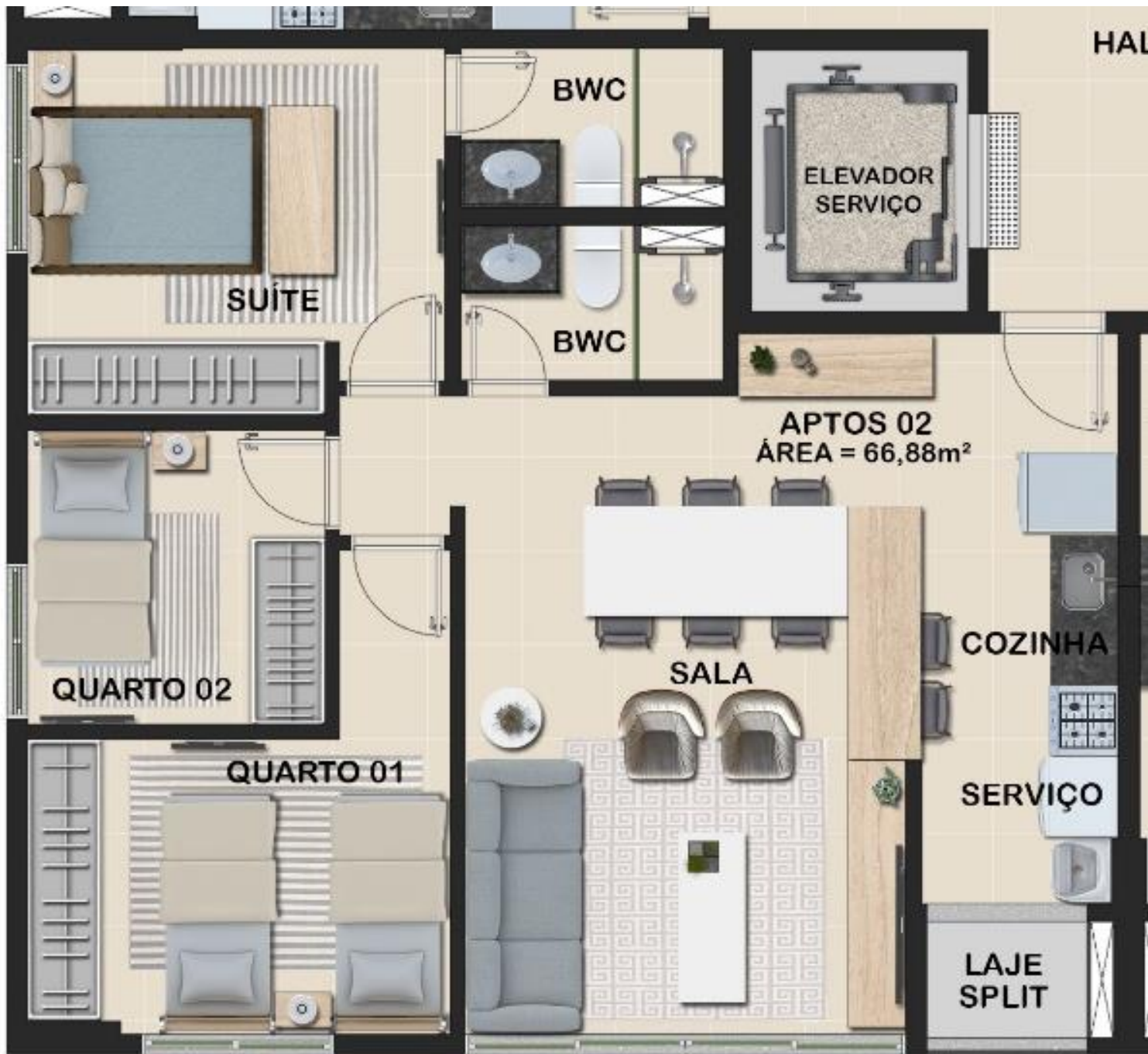
• Term 01 e 02  
66,88m<sup>2</sup>

• Term 03 e 04  
50,71m<sup>2</sup>

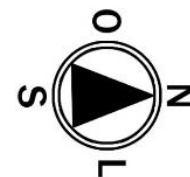


PAVIMENTO TIPO





• Term 01 e 02  
66,88m<sup>2</sup>

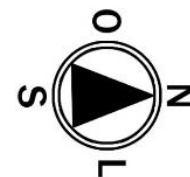


PAVIMENTO TIPO





• Term 03 e 04  
50,71m<sup>2</sup>



PAVIMENTO TIPO



 **Conceito aberto**  
*sala e cozinha gourmet integradas* 








**INTEGRAÇÃO**

**A FAMÍLIA E OS AMIGOS MAIS PERTO**





**COZINHA GOURMET**  
OPÇÃO DE BALCÃO GOURMET PARA  
OS AMANTES DA CULINÁRIA





**CONCEITO ABERTO**  
INTEGRA OS AMBIENTES PROMOVENDO  
AMPLITUDE





**AMPLITUDE**  
A PAISAGEM DENTRO DA SUA CASA





**MODERNIDADE**  
**VOCÊ PODE TER O QUE DESEJA**





**MODERNIDADE**  
**SUA CASA DO SEU JEITO**





**SUÍTE MASTER**  
CONFORTO E COMODIDADE



A modern home office with a desk, chair, sofa, and bookshelves. The room features a desk with a computer monitor and an ergonomic chair, a sofa with purple cushions, and a bookshelf with framed architectural drawings. The walls are covered in vertical wood slats, and the ceiling has recessed lighting.

**HOME OFFICE**  
PARA TRABALHAR OU PARA  
RECEBER



# FECHADURA DIGITAL

COMODIDADE  
CONTROLE DE ACESSO  
E MODERNIDADE

**TaMarineira**  
PRINCE  
VANGUARD

 Pernambuco  
Construtora





**REUSO DE ÁGUA**  
**PRESERVAÇÃO DO MEIO**  
**AMBIENTE**



**TOMADAS USB**  
**NO APARTAMENTO**  
**E NAS ÁREAS COMUNS**



**WI-FI**  
**NAS ÁREAS COMUNS**





# PORCELANATO

ACABAMENTO PADRÃO DOS  
APARTAMENTOS



# PONTO DE FILTRO

ENTREGUE NA COZINHA



# LOCKERS INTELIGENTES

LOCKERS PARA DELIVERYS





**Mais do que um  
apartamento**



**Ta****arineiro**  
 **PRINCE**  
**VANGUARD**

